



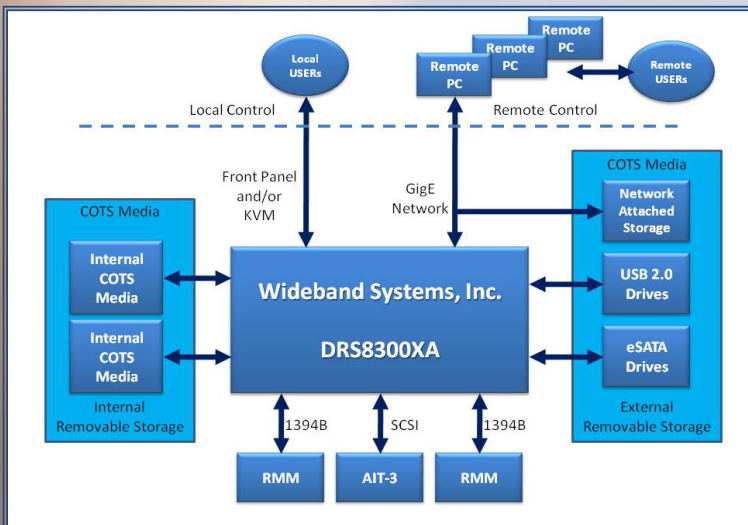
DRS8300XA

Wideband Telemetry Recorder

Performance, Reliability, & Support

The DRS8300XA is the versatile member of the Industry-leading Digital Recording System (DRS) product family. Optimized for the Telemetry market, the DRS8300XA provides exceptional flexibility while maintaining strict compliance with the IRIG-106 CH10 Standard.

The DRS8300XA employs a flexible architecture which supports direct IRIG-106 CH10 recording/reconstruction to/from a variety of COTS media. The standard configuration includes: two internal, removable 500GB drives, interface ports to attach external USB 2.0, Firewire, or eSATA drives, an internal AIT-3 Tape drive, and 1394b ports to support CH10 RMMs.



Native IRIG-106 CH10 Recorder/Reproducer

Direct Record/Playback to/from Internal and External NTFS COTS Media (USB 2.0, Firewire, & SATA)

Direct Playback from AIT-3 Tapes and CH10 Removable Memory Modules (RMMs)

Flexible Remote Control Operations and IRIG-106 Publish Support

Accepts up to 3 User-installable Interface Boards (IFBs)

Accepts and Reproduces IRIG-A/B/G External 1PPS and 10MHz Refs

Gigabit Ethernet Network



*Industry-leading
Performance, Reliability, & Support*



DRS8300XA

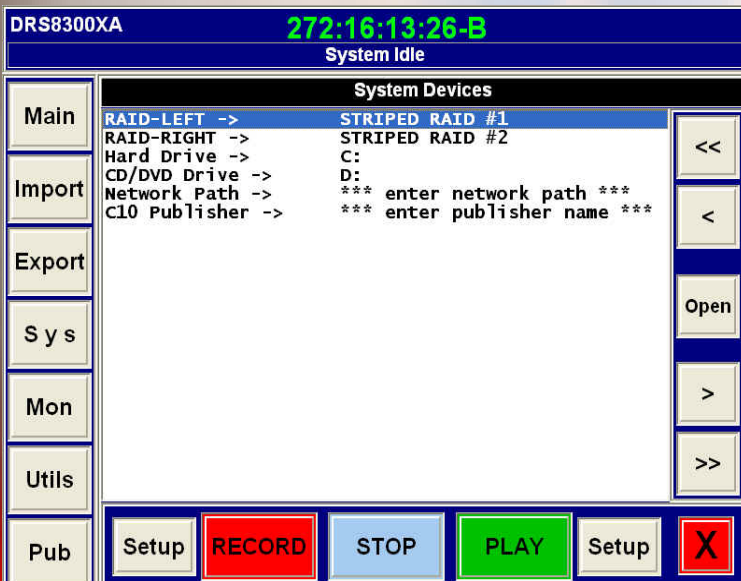
Wideband Telemetry Recorder

Performance, Reliability, & Support

Technical Specifications

Dimensions:	5.25 x 19 x 23 inches
Weight:	35 lbs
Temp (op):	5 to 50 degs C
Humidity (op):	5% to 95%, non-cond
Temp (non-op):	-25 to 65 degs C
Power (VAC):	90-132/180-264 VAC
Power (Hz):	47 to 63 Hz
Power (Watts):	<320 Watts
Internal Media:	Two Removable SATA Disks One AIT-3 Tape Drive
External Media:	USB 2.0, eSATA, Firewire, 1394b for CH10 RMMs
Network:	Gigabit Ethernet supporting Network Attached Media, Remote Control, and CH10 Publish
Operator Control:	Local Control via Front Panel 6.5" Touch Screen and/or auxiliary KVM Remote Control via Network attached PC

Front Panel Touch Screen Control



Interface Options

Standard Telemetry Interface Boards:

4A4D	4 Analog Chs (up to 80MSPS) 4 Digital PCM Chs (0-40Mbps)
12D	12 Digital PCM Chs (0-40Mbps)
2CHA1	2 High-perf Analog Chs (200MSPS)
1E4S	1 Ethernet Ch (10/100/1000) 4 RS-232 Serial Chs (up to 1MBaud)
2V	2 Video Chs NTSC/PAL Uncompressed and MPEG2
12M1553	12 Chs Mil-Std-1553

General Analog Interface Boards:

Multi-ch, 8-16 bit AD/DAs, 50KSPS-400MSPS

General Digital Interface Boards:

1/8/16/32 bits, ECL/PECL, LVDS, TTL logic

Other Interface Boards:

Telecom, CDL, Serial FPDP, CameraLink, DCRSi, DIR, and many more ...

Custom Interfaces:

Can be provided quickly and cost-effectively

DRS8300XA Warranty

Industry-leading Two Year Limited Warranty

Ordering Information

Please contact our technical sales staff to configure your Digital Recording System. Each system can be tailored to meet your interface, control, and fault tolerance requirements.

Email: sales@wideband-sys.com

Voice: (949) 420-0474

Lifetime Product Support

Firmware & Software upgrades and technical support are provided without additional cost to our valued customers.

SPECIFICATIONS SUBJECT TO CHANGE WITHOUT NOTICE